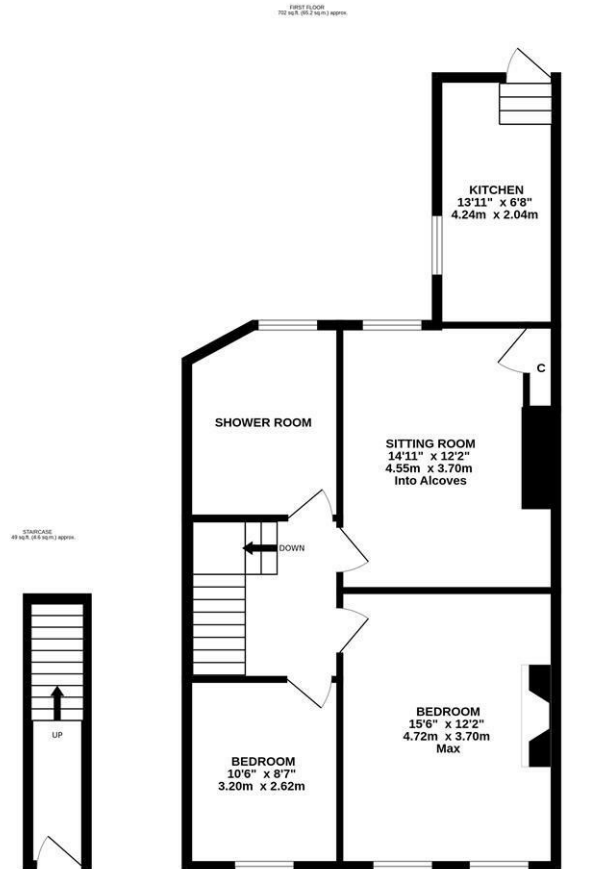




Well presented throughout, this delightful two bedroom upper floor 'Tyneside' flat is ideally located on the west backing side of Sandringham Road, South Gosforth. Sandringham Road, situated a stones-throw from South Gosforth Metro Station, The Brandling Villa and within walking distance distance from Gosforth's High Street with its new cafe culture, this property offers a perfect purchase opportunity for a range of buyers.

The accommodation briefly comprises; entrance hall with stairs to first floor landing; sitting room with fitted alcove storage cupboard; stylish kitchen with fitted units, work surfaces, spot lighting and rear stair access to the yard; generous shower room, complete with three piece suite and spot lighting; two bedrooms, bedroom one with feature fireplace and dual windows. Externally, a west facing rear yard, enclosed with wall boundaries and gated access to the rear service lane. Early viewings are essential to avoid disappointment!

Well Presented Upper Tyneside Flat | 751 Sq ft (69.8m2) | Two Bedrooms | Sitting Room | Stylish Kitchen | Shower Room | Private West Facing Rear Yard | Popular Location | Leasehold - Tyneside Lease with Peppercorn Rent - 960 Years Remaining | Council Tax Band A | EPC: Rating D



TOTAL FLOOR AREA: 751 sq.ft. (69.8 sq.m.) approx.
 Whilst every attempt has been made to ensure the accuracy of the floorplan contained here, measurements of doors, windows, rooms and any other items are approximate and no responsibility is taken for any error, omission or mis-statement. This plan is for illustrative purposes only and should be used as such by any prospective purchaser. The services, systems and appliances shown have not been tested and no guarantee as to their operability or efficiency can be given.
 Made with Metropac (2020).



Offers Over £215,000

IMPORTANT NOTE: These particulars and the descriptions and measurements herein do not constitute representation and whilst every effort has been made to ensure accuracy, this cannot be guaranteed.

